



# *Dar Al-Bluna*

## *Victoria*



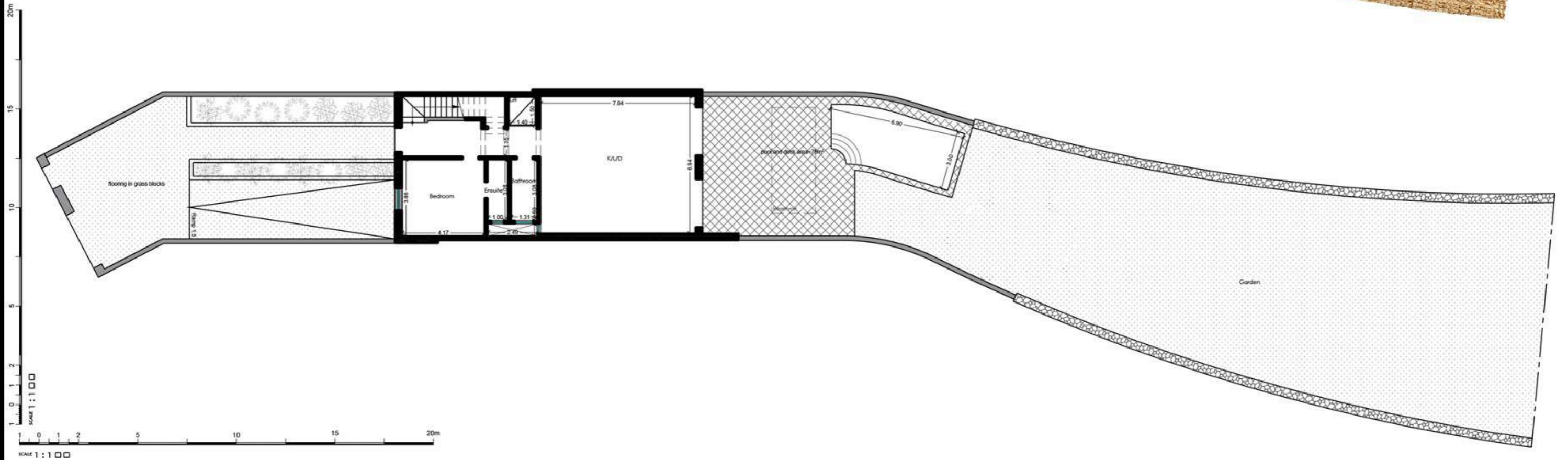
Plot : 02  
Basement Floor (Level 0)

Artistic Impressions only  
Beams may protrude. Minimum  
internal height under beam is 2.1m

Internal : 111 m<sup>2</sup> External : 0 m<sup>2</sup>  
Total Area : 111 m<sup>2</sup>

# Dar Al-Bluna

## Victoria



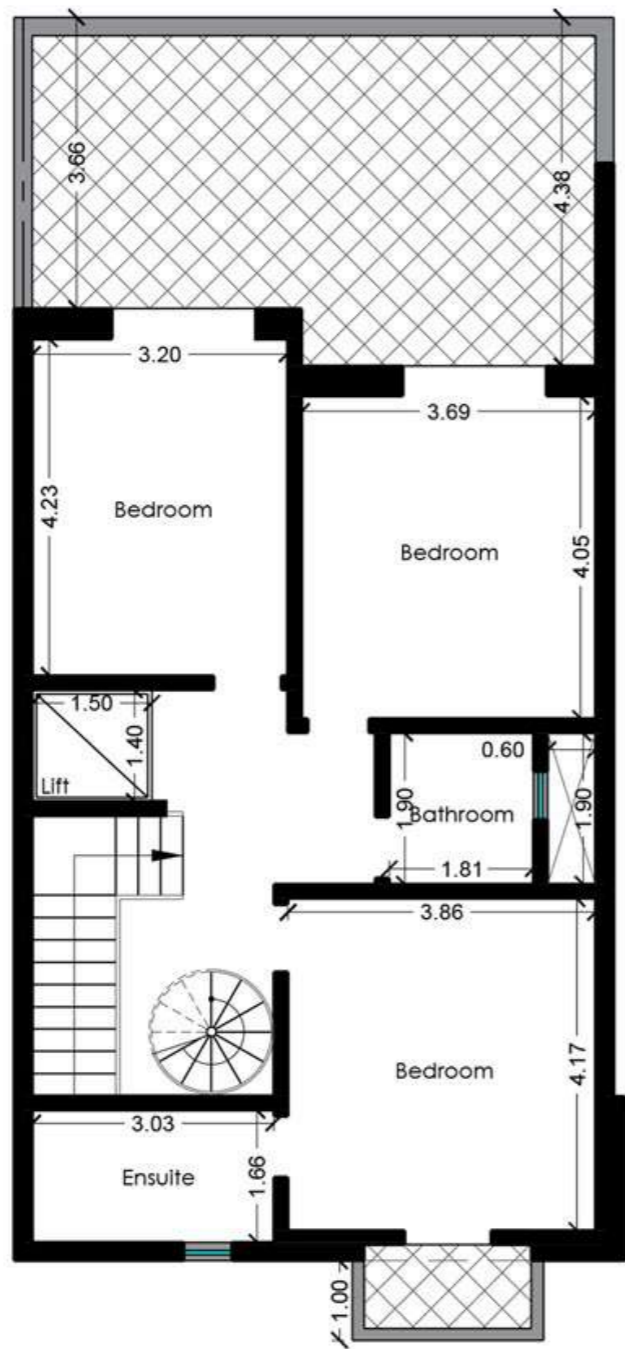
Plot : 02  
Ground Floor (Level 1)

Artistic Impressions only  
Beams may protrude. Minimum  
internal height under beam is 2.1m

Internal : 112 m<sup>2</sup> External : 520 m<sup>2</sup>  
Total Area : 632 m<sup>2</sup>

# Dar Al-Bluna

## Victoria



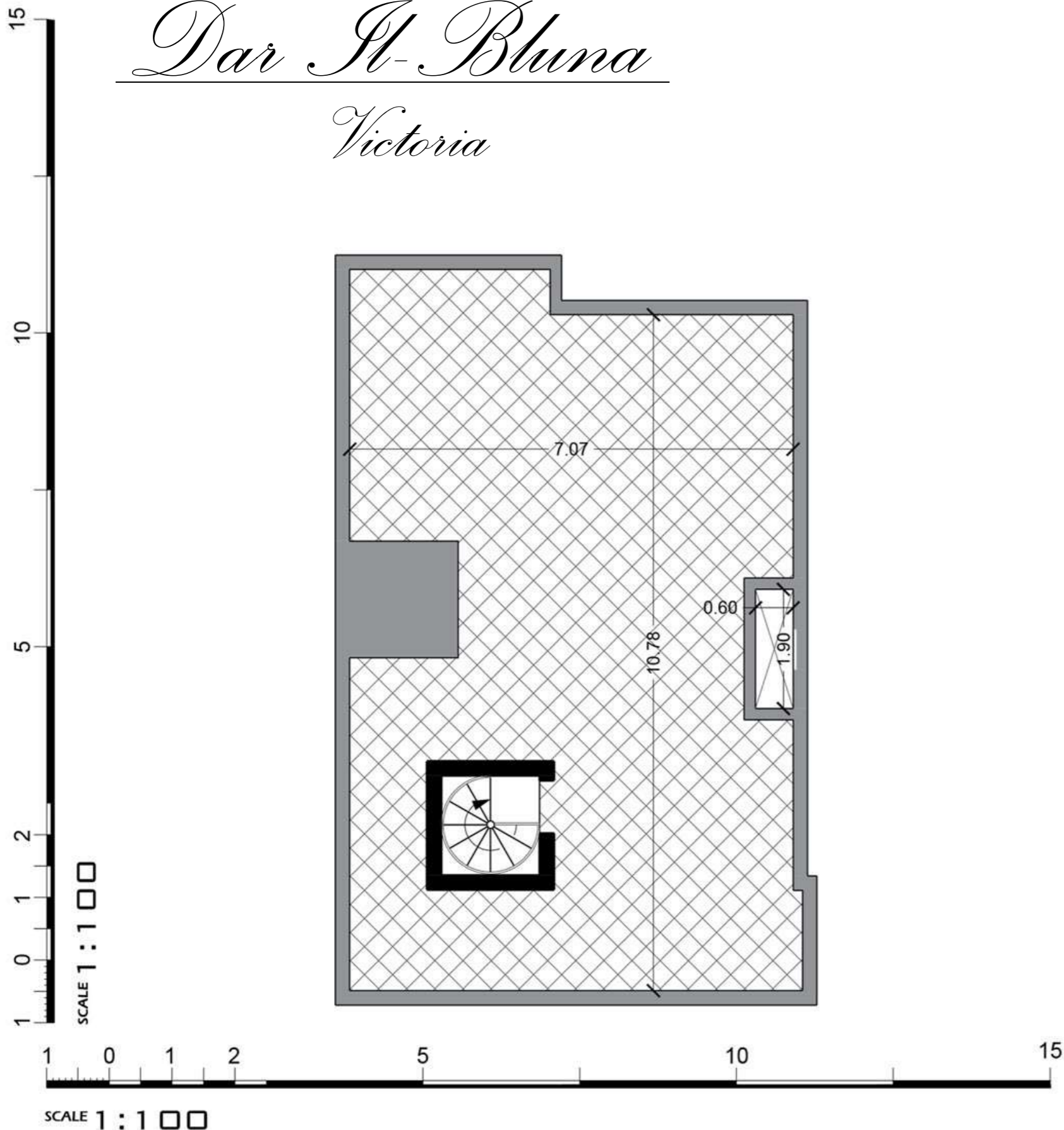
Plot : 02  
First Floor (Level 2)

Artistic Impressions only  
Beams may protrude. Minimum  
internal height under beam is 2.1m

Internal : 82 m<sup>2</sup> External : 31 m<sup>2</sup>  
Total Area : 113 m<sup>2</sup>

# Dar Al-Bluna

## Victoria



Plot : 02  
Roof Floor (Level 3)

Artistic Impressions only  
Beams may protrude. Minimum  
internal height under beam is 2.1m

Internal : 0 m<sup>2</sup> External : 79 m<sup>2</sup>  
Total Area : 79 m<sup>2</sup>